



jordan fishwick

22 Budworth Walk, SK9 2HS
Guide Price £269,950



Budworth Walk Wilmslow SK9 2HS

Guide Price £269,950




Located on Budworth Walk, this spacious and well presented four bedroom mid mews property offers well proportioned internal accommodation. The property is a short drive away from Wilmslow centre which offers a wide range of amenities, which include a number of local shopping facilities, bars, restaurants, local leisure centre and with Wilmslow train station offering a direct service to London Euston and Manchester City centre the location caters for many different needs. In brief the property consists of an entrance hallway which provides access to the ground floor accommodation, this includes a downstairs W.C, living room and a spacious kitchen diner. The kitchen diner is well presented and features a modern fitted kitchen with space for a range oven and further kitchen appliances. The contemporary kitchen has a breakfast bar area and additional space for a dining table and chair set. A set of UPVC double glazed French patio doors lead to the rear garden. Located on the first floor there are four bedrooms, three of which have laminate wood effect flooring. Bedroom two features a fitted wardrobe providing additional storage. The family bathroom has been re-fitted with a stylish and contemporary bathroom suite and consists of a large walk-in shower area and is fully tiled to the walls and floor. Externally the rear garden is low maintenance in design with a patio area and an artificial lawn providing all year-round use. The property is double glazed, and gas central heated and has an internal storage cupboard which is access from the garden. Early interest expected due to the size of accommodation available.



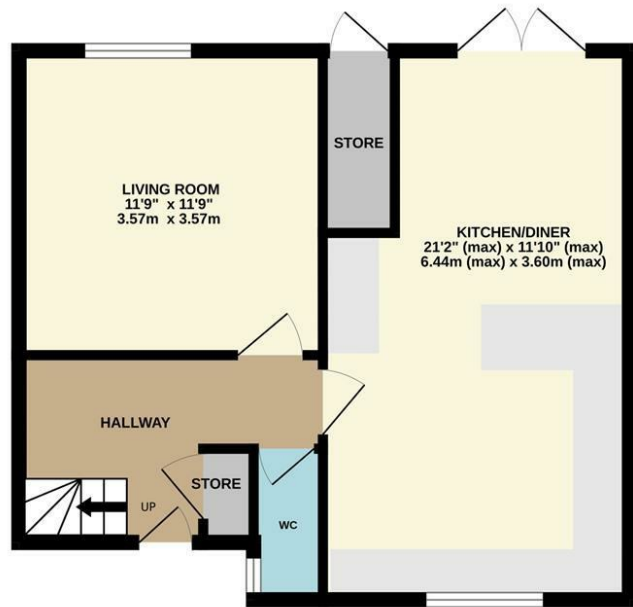
- Four Bedrooms
- Downstairs W.C
- Modern Kitchen Diner
- Low Maintenance Rear Garden
- Artificial Lawn
- Stylish Shower room
- Residents Parking area



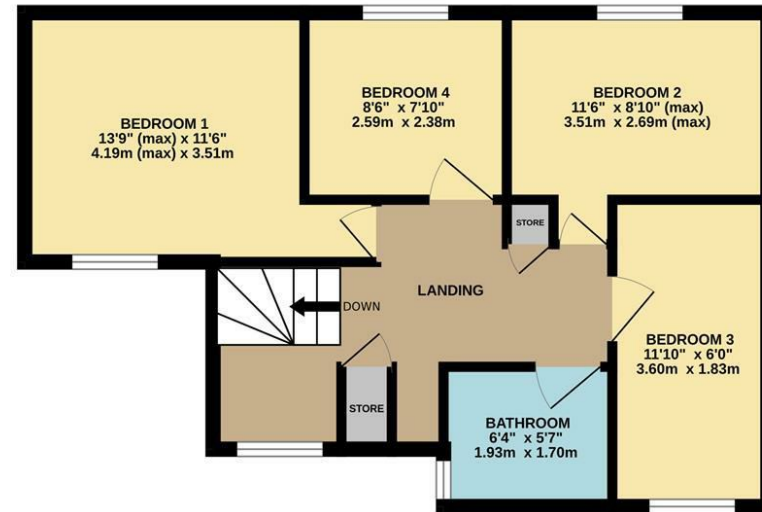
Energy Efficiency Rating		
	Current	Potential
Very energy efficient - lower running costs		
(92 plus) A		
(81-91) B		85
(69-80) C	70	
(55-68) D		
(39-54) E		
(21-38) F		
(1-20) G		
Not energy efficient - higher running costs		
England & Wales	EU Directive 2002/91/EC 	



GROUND FLOOR



1ST FLOOR



Measurements are approximate. Not to scale. Illustrative purposes only
Made with Metropix ©2025



These particulars are believed to be accurate but they are not guaranteed and do not form a contract. Neither Jordan Fishwick nor the vendor or lessor accept any responsibility in respect of these particulars, which are not intended to be statements or representations of fact and any intending purchaser or lessee must satisfy himself by inspection or otherwise as to the correctness of each of the statements contained in these particulars. Any floorplans on this brochure are for illustrative purposes only and are not necessarily to scale.

Offices at: Chorlton, Didsbury, Disley, Hale, Glossop, Macclesfield, Manchester Deansgate, Manchester Whitworth Street, New Mills, Sale, Wilmslow and Withington

36-38 Alderley Road, Wilmslow SK91JX
01625 532000

wilmslow@jordanfishwick.co.uk
www.jordanfishwick.co.uk